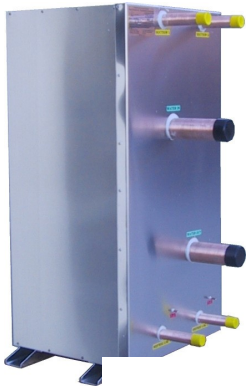


## HANWEST AQUA SYSTEMS LTLC SERIES

**HANWEST AQUA SYSTEMS** "LTLC" series "close approach" liquid chilling evaporators are superior to all other liquid chillers for chilling fresh water or sea water close to their freezing temperatures. The "LTLC" series evaporators quickly and continuously chill fresh water in storage tanks to 0.5°C or sea water on board fishing vessels to -1.5°C. Less energy is used compared to older systems that use tanks with refrigerated coils. Switch monitoring modules are included for applications where the water is to be chilled close to the freezing temperature.



AQUA SYSTEMS  
 LIQUID CHILLING EVAPORATOR  
 MODEL S-6TV/2LC-MT  
 FOR MEDIUM & HIGH  
 TEMPERATURE WATER  
 CHILLING +5 TO +30° C

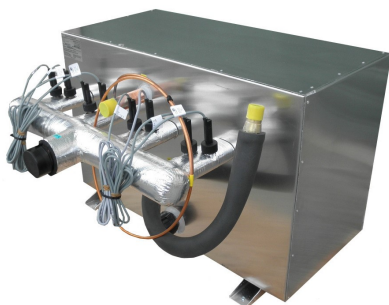
AQUA SYSTEMS 60 kW FRESH WATER CHILLER  
 TO CHILL FRESH WATER TO 0.5°C



200 kW FRESH WATER CHILLER TO CHILL  
 WATER TO 0.5°C



AQUA SYSTEMS  
 LIQUID CHILLING  
 EVAPORATOR  
 WITH MINI FLOW  
 SWITCHES FOR  
 CHILLING FRESH  
 WATER TO 0.5°C.



AQUA SYSTEMS CHILLER TO CHILL FRESH  
 WATER TO 0.5°C

AQUA SYSTEMS  
 WATER COOLED  
 CONDENSER

COMBINATION LIQUID CHILLER & CONDENSER ASSEMBLY  
 FOR WATER COOLED FRESH WATER SMALLGOODS PRO-  
 CESSION COOLING APPLICATION. FRESH WATER IS CHILLED  
 TO 0.5°C NOMINAL CAPACITY 200 KW.