

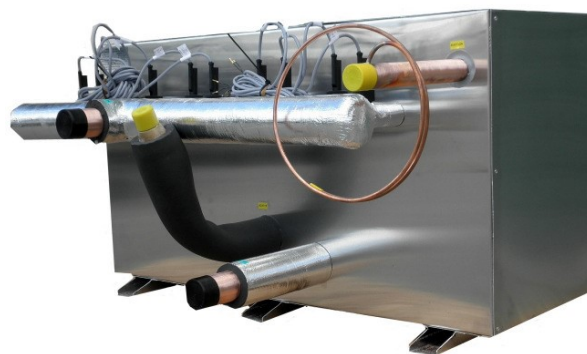
**HANWEST AQUA SYSTEMS LTLC-FS SERIES CLOSE APPROACH
 LIQUID CHILLING EVAPORATORS - CAPACITIES 2 TO 300kW.
 FRESH WATER CHILLED TO 0.5°C - SEA WATER TO -2°C BRINE
 CHILLED TO -20°C.**

PROVEN LOW TEMPERATURE LIQUID CHILLING EVAPORATORS FOR CHILLING LIQUIDS CLOSE TO THEIR FREEZING TEMP WITHOUT THE RISK OF FREEZE UPS

Hanwest Aqua Systems 'LTLC-FS' liquid chilling evaporators incorporate unique tube geometry with a close controlled refrigerant path that enables fluids to be cooled continuously close to the freezing point of the liquid being chilled. They can be supplied for use with all suitable HFC - HFC blends and Hydrocarbon refrigerants. Models are available for fresh water - sea water and brines. They are certified for use with R410A refrigerant. Chillers include liquid distributors and leads, suction headers and water inlet and outlet manifolds. Mini circuit flow switches and electronic flow switch monitoring module are included for applications where the water is to be chilled close to the freezing temperature.



Model S-4/3HLTLC-FS 18 kW direct expansion LCE (liquid chilling evaporator) operating with R410A refrigerant chilling fresh water to 2°C .



Model S-6/5HLTLC-FS 24 kW direct expansion LCE for chilling potable fresh water in a storage tank to 1°C, operating with R404A Refrigerant.



Model S-6/12HLTLC-FS 120 kW high efficiency LCE operating on R410A refrigerant with EEV's fitted along with EEV drivers and flow switch control module. The application is for chilling propylene glycol brine to -2°C. The close approach selection between the leaving brine and refrigerant evaporating temperature resulted in energy efficient operation of the chiller unit.



Model CN-6/14-FS 150 kW direct expansion liquid chilling evaporator for a marine air conditioning application chilling fresh water to 4°C.