



## APPLICATION BULLETIN : HAN-L5/PCB-058V2. SUBJECT : HAN-L5 FOR WATER COOLED A/C UNITS.



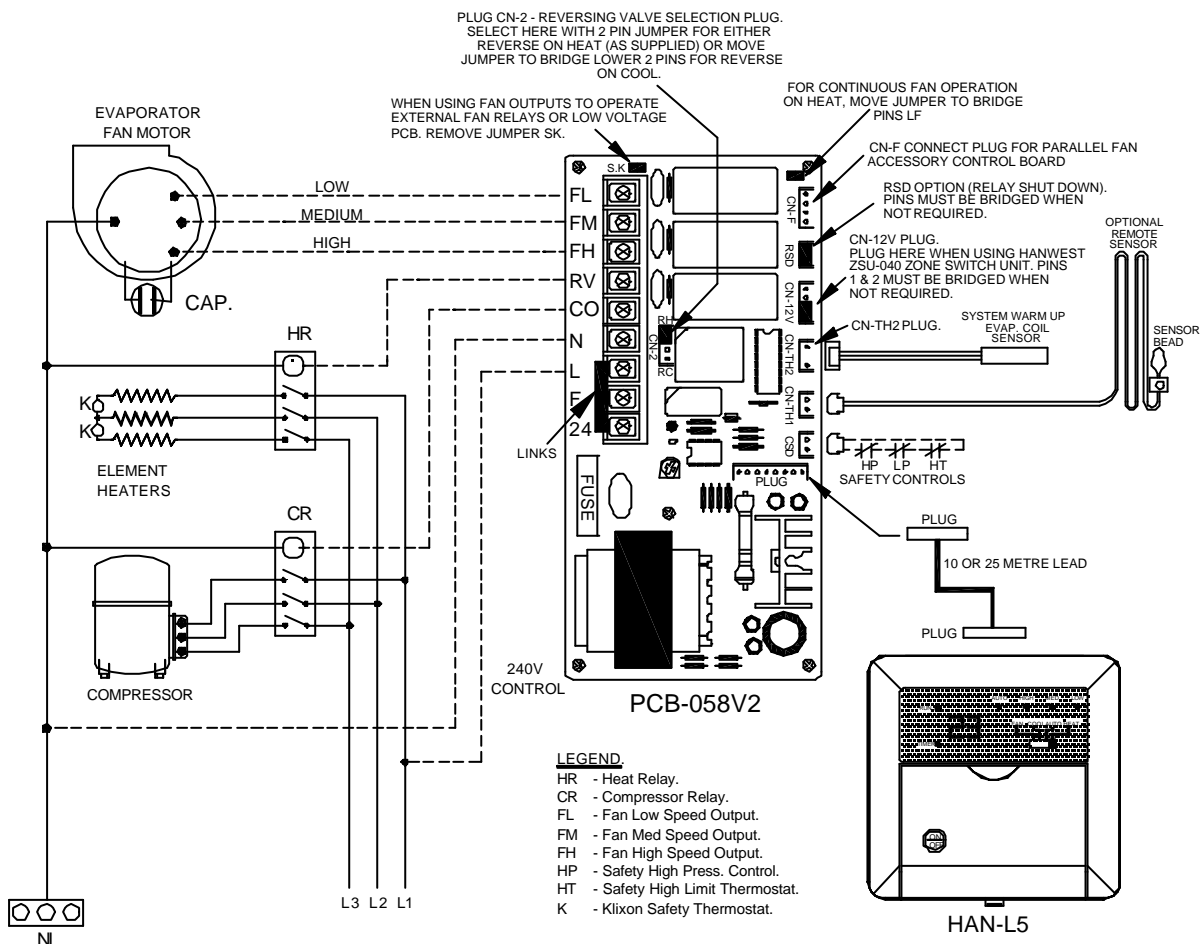
The HAN-L5(B) is suitable for use with water cooled air conditioning units for new installations or can be easily fitted on to existing installations. A standard HAN-L5(B) can be used with the following types of A/C units.

1. Cooling only.
2. Cooling / electric element heat (fan run on feature standard for electric heat installations).
3. Reverse cycle.

The program to suit any of the above is selected by DIP switches located on the back of the HAN-L5 wall controller.

Safety controls are connected to the "CSD" plug and in the event of a safety control breaking the "CSD" circuit the control will switch off and lock the system out. Once the safety control has been reset the system can be restarted by simply pressing the ON/OFF button on the HAN-L5 wall control.

**Note:** The "CSD" control circuit is 12V DC.



### OPTIONS.

The following options are available:

- a) Aux. relay to start condenser water pump on compressor start.
- b) Interlock to stop compressor on condenser water pump failure.