



HANWEST PTY LTD

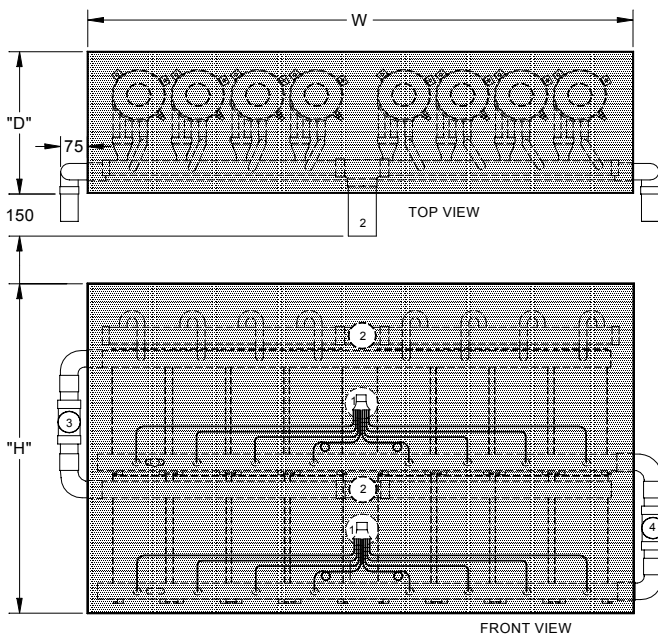
SPECIALISED COMPONENTS FOR AIR CONDITIONING & REFRIGERATION

ABN 49 003 452 551



AQUA SYSTEMS "S-*/16HVLC" LIQUID CHILLING D.X. EVAPORATORS FOR AIR CONDITIONING OR INDUSTRIAL LIQUID CHILLERS. WATER OR BRINE MODELS WITH CAPACITIES FROM 160 kW TO 340 kW.

QUALITY ↔ RELIABILITY ↔ ECONOMICAL ↔ QUICK DELIVERY



Note: Above model shown with optional insulated casing.

FEATURES.

High Efficiency. Copper or Cupro Nickel enhanced surface tubes with internal spiral fin along with the intermeshed co-axial tube geometry result in exceptionally high rate of heat transfer. Close approach temperatures increase system efficiency and reduce operating costs.

No Oil Trapping. Controlled refrigerant path ensures continuous oil return. On brine systems operating below -5°C evaporating temperatures the condensing unit should be fitted with a discharge gas oil separator.

Convenient. Supplied with selected liquid distributors to suit your application.

Robust Design. Large bore (19mm) water tubes with even fluid distribution are low fouling. The continuous tube water circuits have no internal joints and ensure long term reliable operation.

Insulation & Casing. Chillers are supplied in insulated aluminium casings to reduce on site installation time and cost.

Compliance. Constructed in accordance with Aust. Standards AS2971 1987 Class 2 serially produced unfired pressure vessels. USA UL® Listed.

Quick Delivery. Generally delivery of chillers is 4-8 working days from date of order.

Chiller Model	Capacity Nominal	Refrig. Suction	Water Conns.	Dimensions(mm)			Weight kg	Legend
				W	D	H		
S-6/16HVLC	300 kW	54 ODS	76 MPT	1570	425	995	400	1. Liquid distributor 2. Suction connection 3. Water in 4. Water out

Note: The nominal capacities shown above are for water chillers. For capacities for low temperature brine applications contact Hanwest office.

IN THE INTEREST OF CONTINUOUS PRODUCT IMPROVEMENT SPECIFICATIONS OR PERFORMANCE DATA MAY CHANGE WITHOUT NOTICE.