



HANWEST PTY LTD

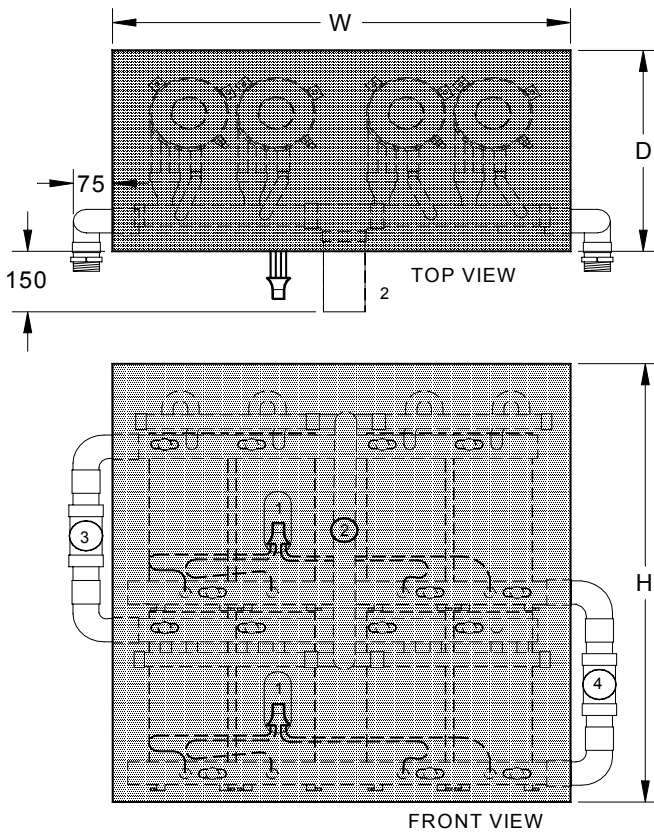
SPECIALISED COMPONENTS FOR AIR CONDITIONING & REFRIGERATION

ABN 49 003 452 551



AQUA SYSTEMS "S-*/8HVLC" LIQUID CHILLING D.X. EVAPORATORS FOR AIR CONDITIONING OR INDUSTRIAL LIQUID CHILLERS. WATER OR BRINE MODELS WITH CAPACITIES FROM 64 kW TO 176 kW.

QUALITY ↔ RELIABILITY ↔ ECONOMICAL ↔ QUICK DELIVERY



FEATURES.

High Efficiency. Copper or Cupro Nickel enhanced surface tubes with internal spiral fin along with the intermeshed co-axial tube geometry result in exceptionally high rate of heat transfer. Close approach temperatures increase system efficiency and reduce operating costs.

No Oil Trapping. Controlled refrigerant path ensures continuous oil return. On brine systems operating below -5°C evaporating temperatures the condensing unit should be fitted with a discharge gas oil separator.

Convenient. Supplied with selected liquid distributors to suit your application.

Robust Design. Large bore (19mm) water tubes with even fluid distribution are low fouling. The continuous tube water circuits have no internal joints and ensure long term reliable operation.

Optional Insulation & Casing. Chillers can be supplied in insulated aluminium casings to reduce on site installation time and cost.

Compliance. Constructed in accordance with Aust. Standards AS2971 1987 Class 2 serially produced unfired pressure vessels. USA UL® Listed.

Quick Delivery. Generally delivery of chillers is 4-8 working days from date of order.

Note: Above model shown with optional insulated casing.

Chiller Model	Capacity Nominal	Refrig. Suction	Water Conns.	Dimensions(mm)			Weight	Legend
				W	D	H		
S-4/8HVLC	64 kW to 120 kW	42 ODS	50 MPT	1035	425	895	98	1. Liquid distributor
S-5/8HVLC	80 kW to 132 kW	54 ODS	50 MPT	1035	425	940	148	2. Suction connection
S-6/8HVLC	120 kW to 176 kW	54 ODS	65 MPT	1035	425	995	200	3. Water in
								4. Water out

Note: The nominal capacities shown above are for water chillers. For capacities for low temperature brine applications contact Hanwest office.

IN THE INTEREST OF CONTINUOUS PRODUCT IMPROVEMENT SPECIFICATIONS OR PERFORMANCE DATA MAY CHANGE WITHOUT NOTICE.