



AQUA SYSTEMS "S-*/6HLC" LIQUID CHILLING D.X. EVAPORATORS FOR AIR CONDITIONING OR INDUSTRIAL LIQUID CHILLERS. FRESH – SALT WATER OR BRINE MODELS WITH CAPACITIES FROM 60 kW TO 123 kW.

QUALITY ↔ RELIABILITY ↔ ECONOMICAL ↔ QUICK DELIVERY

FEATURES.

High Efficiency. Copper or Cupro Nickel enhanced surface tubes with internal spiral fin along with the intermeshed co-axial tube geometry result in exceptionally high rate of heat transfer. Close approach temperatures increase system efficiency and reduce operating costs.

No Oil Trapping. Controlled refrigerant path ensures continuous oil return. On brine systems operating below -5°C evaporating temperatures the condensing unit should be fitted with a discharge gas oil separator.

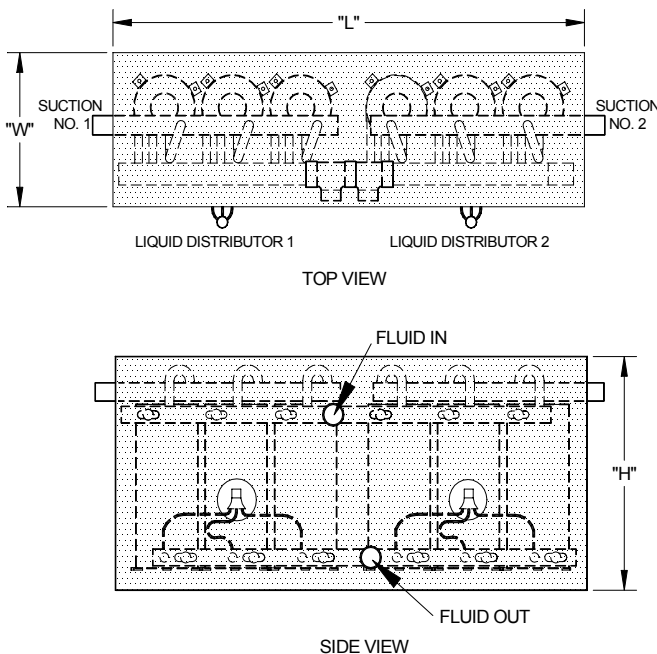
Convenient. Supplied with selected liquid distributors to suit your application. Compact size will fit easily into small area.

Robust Design. Large bore (19mm) water tubes with even fluid distribution are low fouling. The continuous tube water circuits have no internal joints and ensure long term reliable operation.

Insulation & Casing. The Aqua Systems liquid chilling evaporators are supplied in a marine grade aluminium casing with polyurethane foam poured in situ. This reduces on site installation & cost.

Compliance. Constructed in accordance with Aust. Standards AS2971 1987 Class 2 serially produced unfired pressure vessels. USA UL® Listed.

Quick Delivery. Generally delivery of chillers is 4-8 working days from date of order.



S-*/6HLC MODEL SHOWN WITH 2 REFRIG. CIRCUITS.

Note: Above model shown with insulated casing.

Refrigerant connections: Connection pipe sizes are for R22 chilled water applications. For other refrigerants the connection sizes will vary.

Water connections: Water connection sizes are nominal & will vary with a particular application.

Chiller Model	Capacity Nominal	Refrig. Suction	Water Conns.	Dimensions(mm)			Weight	Legend
				W	D	H		
S-4/6HLC	60 TO 78 kW	35mm ODS	50mm ODS	1270	360	480	72	1. Liquid distributor
S-5/6HLC	72 TO 96 kW	42mm ODS	50mm ODS	1270	360	510	78	2. Suction connection
S-6/6HLC	99 TO 123 kW	42mm ODS	65mm ODS	1270	360	540	95	3. Water in
								4. Water out

Note: The nominal capacities shown above are for water chillers. For capacities for low temperature brine applications contact Hanwest office.