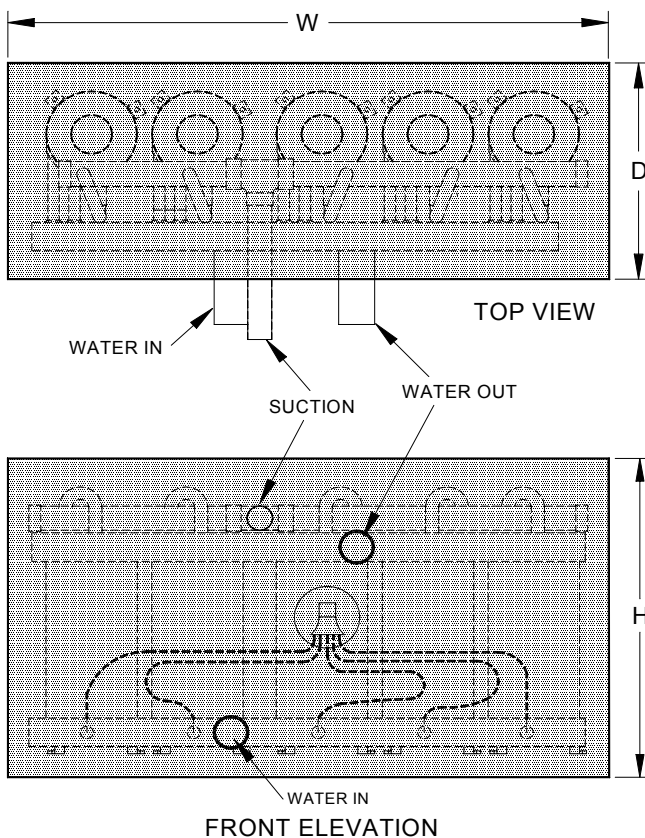




AQUA SYSTEMS “S-*/5HLC” SERIES LIQUID CHILLING EVAPORATORS FOR CHILLED WATER OR LOW TEMPERATURE BRINE APPLICATIONS.



Note: Above model shown with optional insulated casing.

DESCRIPTION.

Hanwest aqua systems “S-5HLC” series liquid chilling evaporators are a direct expansion co-axial coil in shell heat exchanger. Suitable for chilling water or brines for industrial process liquid cooling or for air conditioning applications. Their compact size makes them ideally suited for use in packaged liquid chillers.

Models are available with copper water tubes or 90/10 cupro nickel tubes for brine or salt water applications.

Available in capacities from 40 kW to 100 kW the chillers can be supplied bare or complete with aluminium casing and foamed in place insulation.

FEATURES.

Water tubes are finned on the refrigerant side for maximum surface extension with internal rifle bore on the water side resulting in highly effective water turbulence providing high heat exchange between refrigerant and water.

Compact size due to the unique design provides high efficiency heat exchange even at low water flows.

No internal joints as a continuous spiral formed water tube is provided for each circuit.

Freeze cleanable easily drainable water tubes do not require chemicals for scale removal. After ensuring that all water is drained from the tubes, freeze cleaning as detailed in the instructions supplied can be carried out. This is the most effective, fast and safe low cost method of cleaning water tubes.

Chiller Model	Nominal Cooling kW	Dimensions(mm)			Refrig. Conns.		Water Conns.	
		W	H	D	Liquid	Suction	In	Out
S-4/5HLC	41 to 65	660	340	320	3/4" ODS	29 ODS	38 ODS	38 ODS
S-5/5HLC	50 to 82	660	400	320	7/8" ODS	29 ODS	38 ODS	38 ODS
S-6/5HLC	72 to 100	660	450	320	1 1/8" ODS	35 ODS	50 ODS	50 ODS

Note: The nominal capacities shown above are for water chillers. For capacities for low temperature brine applications contact Hanwest office.