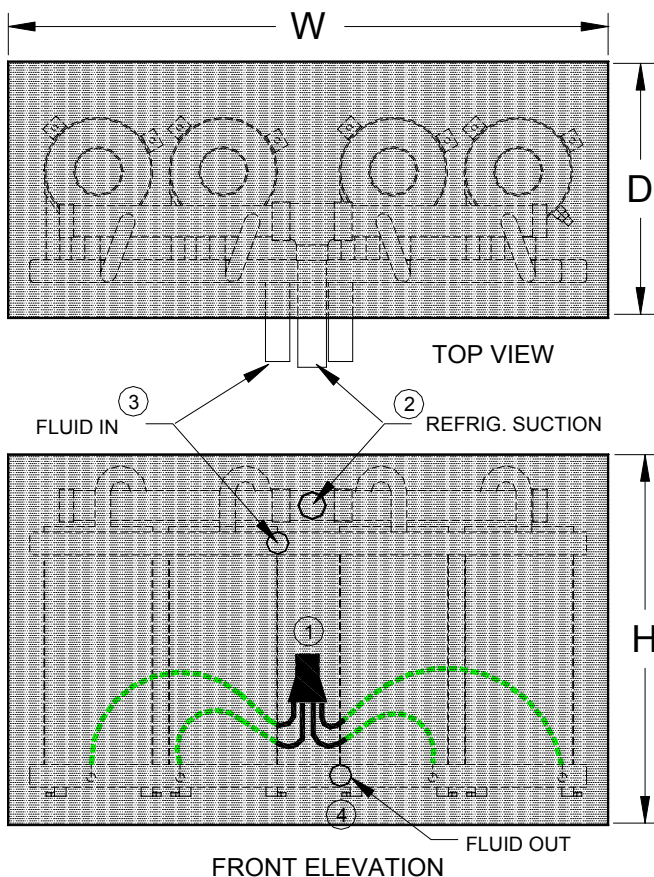




# AQUA SYSTEMS “S-\*/4HLC” LIQUID CHILLING D.X. EVAPORATORS FOR AIR CONDITIONING OR INDUSTRIAL LIQUID CHILLERS. WATER OR BRINE MODELS WITH CAPACITIES FROM 32 kW TO 88 kW.

**QUALITY ↔ RELIABILITY ↔ ECONOMICAL ↔ QUICK DELIVERY**



**Note:** Above model shown with optional insulated casing.

**Refrigerant connections:** Connection pipe sizes are for R22 chilled water applications. For other refrigerants the connection sizes will vary.

**FEATURES.**

**High Efficiency.** Copper or Cupro Nickel enhanced surface tubes with internal spiral fin along with the intermeshed co-axial tube geometry result in exceptionally high rate of heat transfer. Close approach temperatures increase system efficiency and reduce operating costs.

**No Oil Trapping.** Controlled refrigerant path ensures continuous oil return. On brine systems operating below -5°C evaporating temperatures the condensing unit should be fitted with a discharge gas oil separator.

**Convenient.** Supplied with selected liquid distributors to suit your application. Compact size will fit easily into small area.

**Robust Design.** Large bore (19mm) water tubes with even fluid distribution are low fouling. The continuous tube water circuits have no internal joints and ensure long term reliable operation.

**Optional Insulation & Casing.** Chillers can be supplied in insulated aluminium casings to reduce on site installation time and cost.

**Compliance.** Constructed in accordance with Aust. Standards AS2971 1987 Class 2 serially produced unfired pressure vessels. USA UL® Listed.

**Quick Delivery.** Generally delivery of chillers is 4-8 working days from date of order.

Chiller Model	Capacity Nominal	Refrig. Suction	Water Conns.	Dimensions(mm)			Weight	Legend
				W	D	H		
S-4/4HLC	32 kW to 56 kW	35 ODS	40 ODS	860	360	450	36	1. Liquid distributor
S-5/4HLC	40 kW to 72 kW	42 ODS	40 ODS	860	360	490	44	2. Suction connection
S-6/4HLC	56 kW to 88 kW	42 ODS	50 ODS	860	360	540	51	3. Water in
								4. Water out

**Note:** The nominal capacities shown above are for water chillers. For capacities for low temperature brine applications contact Hanwest office.