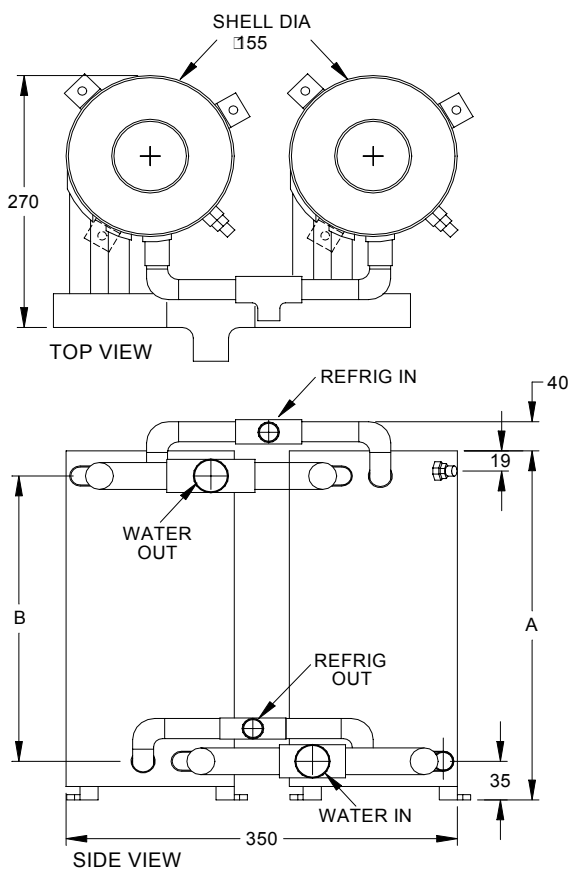




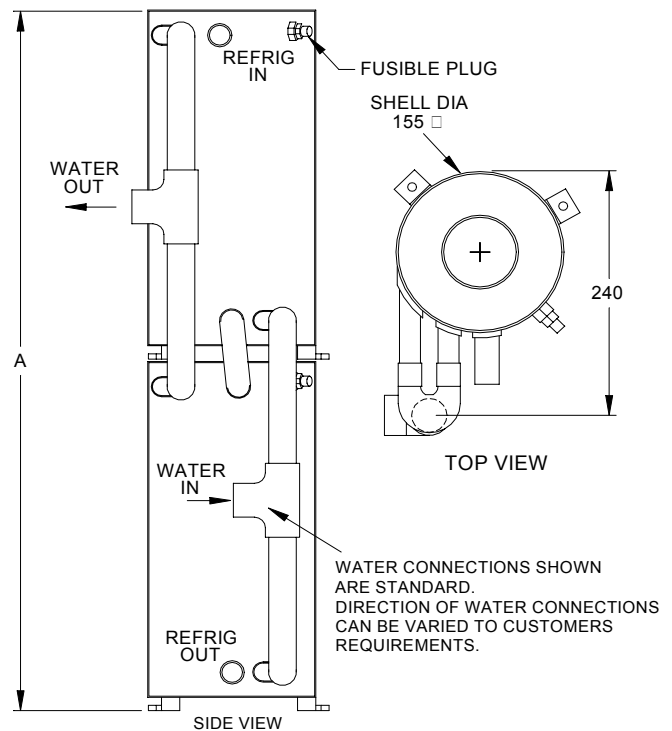
ABN 49 003 452 551

## WATER COOLED CONDENSER ASSEMBLIES FOR AIR CONDITIONING OR REFRIGERATION EQUIPMENT. MODELS AVAILABLE FOR FRESH WATER – MARINE SALT WATER – POOL AND SPA WATER HEATERS. CAPACITIES FROM 24 kW TO 60 kW TOTAL HEAT REJECTION. HEAT RECOVERY DISCHARGE GAS DE-SUPERHEATERS.

HORIZONTAL ASSEMBLY  
S-/2H & CN/2H



VERTICAL ASSEMBLY  
S-/2V & CN/2V SERIES



Models		Refrig. Conns.		Water Conns.		Dim.	Dim.	Weight
Fresh	Salt	In	Out	In	Out	A	B	kg
S-4/2H	& CN4/2H	22mm	19mm	32mm		274	226	22
S-5/2H	& CN5/2H	22mm	19mm	32mm		318	270	25
S-6/2H	& CN6/2H	29mm	19mm	32mm		374	310	29
S-4/2V	& CN4/2V	22mm	22mm	32mm		565	-	22
S-5/2V	& CN5/2V	22mm	22mm	32mm		650	-	25
S-6/2V	& CN6/2V	22mm	22mm	32mm		730	-	29

**NOTE:** Fresh water models eg. S-4/2H & S-4/2V all have copper manifolds & fittings.  
Marine salt water models eg. CN4/2H & CN-4/2V have 90/10 cupro nickel water manifolds.

IN THE INTEREST OF CONTINUOUS PRODUCT IMPROVEMENT SPECIFICATIONS OR PERFORMANCE DATA MAY CHANGE WITHOUT NOTICE.